

Marshall

TUFTON - PORTABLE STEREO LOUDSPEAKER

USER MANUAL

LEGAL & TRADEMARK NOTICE

- Design of device and packaging are intellectual properties of Zound Industries International AB and Marshall Amplification Plc. © All Rights Reserved. Zound Industries International AB is hereinafter referred to as “Zound Industries” or “manufacturer”.
- MARSHALL, Marshall Amps, their respective logos, “Marshall” and “Marshall” trade dress are trademarks and intellectual property of Marshall Amplification Plc and may not be used without permission. Permission granted to Zound Industries.
- Qualcomm aptX is a product of Qualcomm Technologies International, Ltd. Qualcomm is a trademark of Qualcomm Incorporated, registered in the United States and other countries, used with permission. aptX is a trademark of Qualcomm Technologies International, Ltd., registered in the United States and other countries, used with permission.
- The Bluetooth® wordmark and logos are registered trademarks owned by the Bluetooth SIG, Inc. and any use of such marks by Zound Industries is under license.
- All other trademarks are the property of their respective owners and may not be used without permission.
- For more legal information related to this product and to its use in your specific region, and for more detailed information about Zound Industries and partner & license information, please visit the website: www.marshallheadphones.com. The user is recommended to visit the website regularly for up-to-date information.

Zound Industries International AB, Centralplan 15, 111 20 Stockholm, Sweden

DISCLAIMER

For use with mobile devices using 3.5 mm jack unprotected two-way standard.

Stated play time is calculated using random selection of music, played at medium volume.

The information contained herein is correct at the time of publication, with reservation for editorial errors. Compatibility with future versions of this product is not guaranteed.

INDEX

ENGLISH

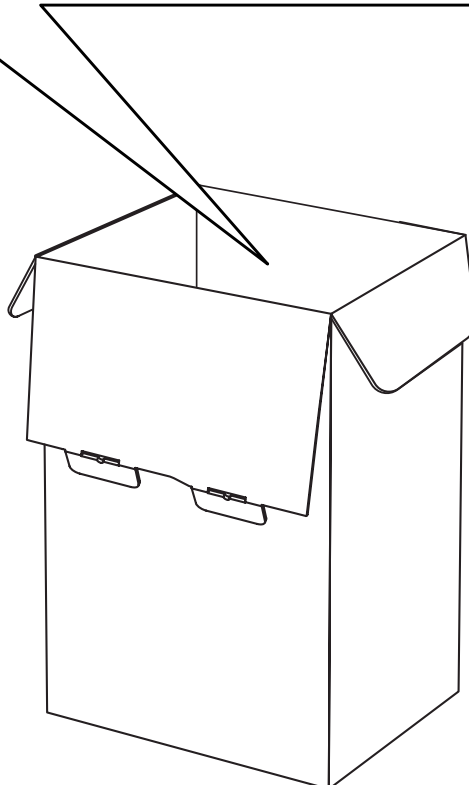
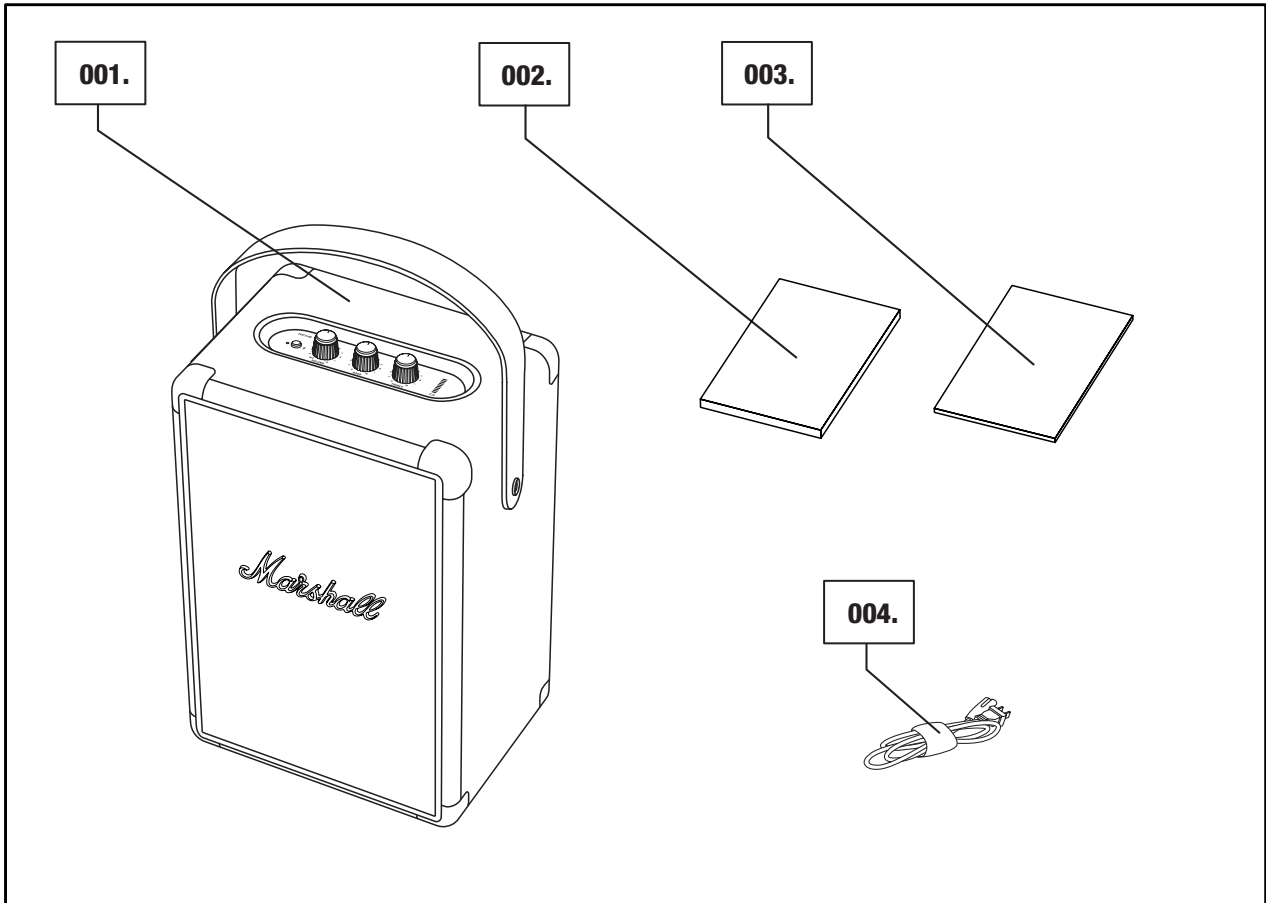
SECTIONS

PAGE

- 002. LEGAL & TRADEMARK NOTICE**
- 002. DISCLAIMER**
- 004. BOX CONTENTS**
- 005. GENERAL DESCRIPTION**
- 007. CHARGING THE INTERNAL BATTERY**
- 008. TURNING THE TUFTON ON/OFF**
- 009. MANY WAYS TO CONNECT**
- 011. CONNECTING VIA AUX INPUT**
- 013. ADJUSTING THE VOLUME/BASS/TREBLE**
- 014. STANDBY MODE**
- 015. TECHNICAL INFORMATION**
- 016. TROUBLESHOOTING**

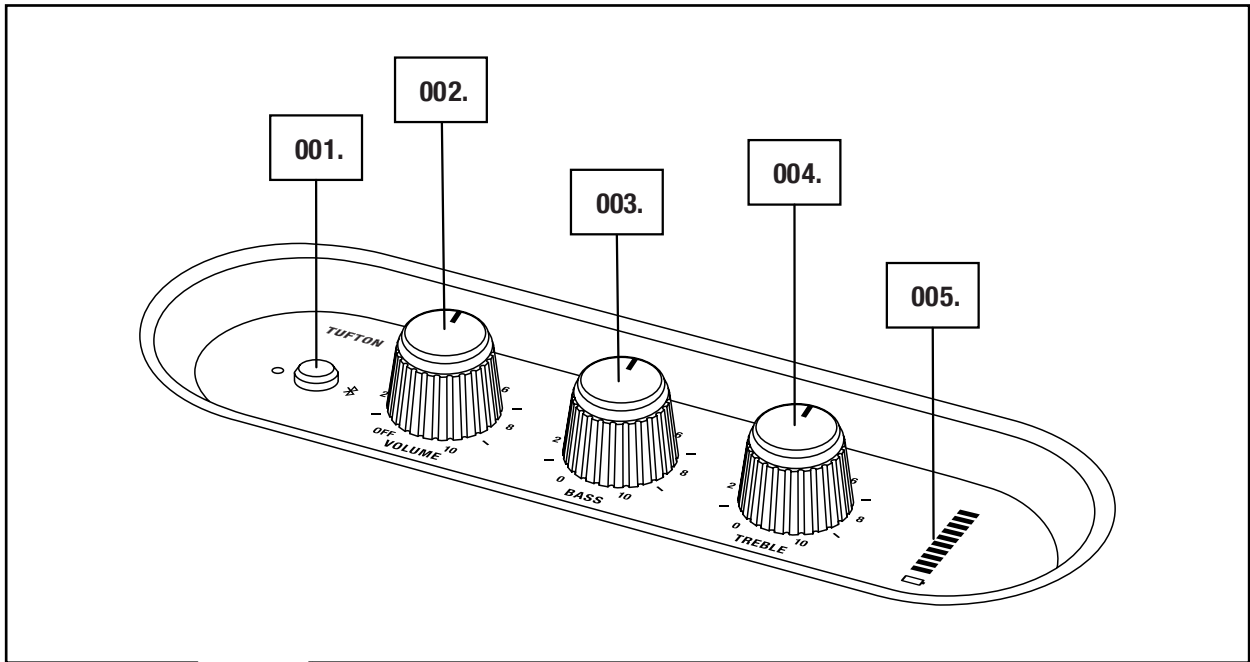
BOX CONTENTS

- 001. MARSHALL TUFTON PORTABLE STEREO LOUDSPEAKER**
- 002. QUICK START GUIDE**
- 003. IMPORTANT SAFETY INSTRUCTIONS**
- 004. MAINS LEAD**



GENERAL DESCRIPTION

- 001. Bluetooth® BUTTON
- 002. POWER/VOLUME KNOB
- 003. BASS KNOB
- 004. TREBLE KNOB
- 005. BATTERY LEVEL INDICATOR

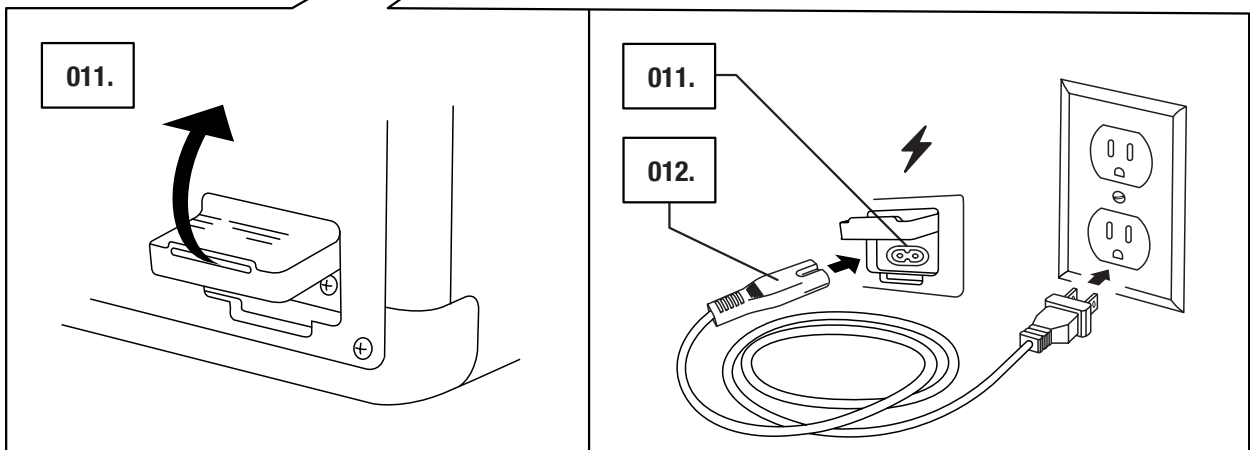
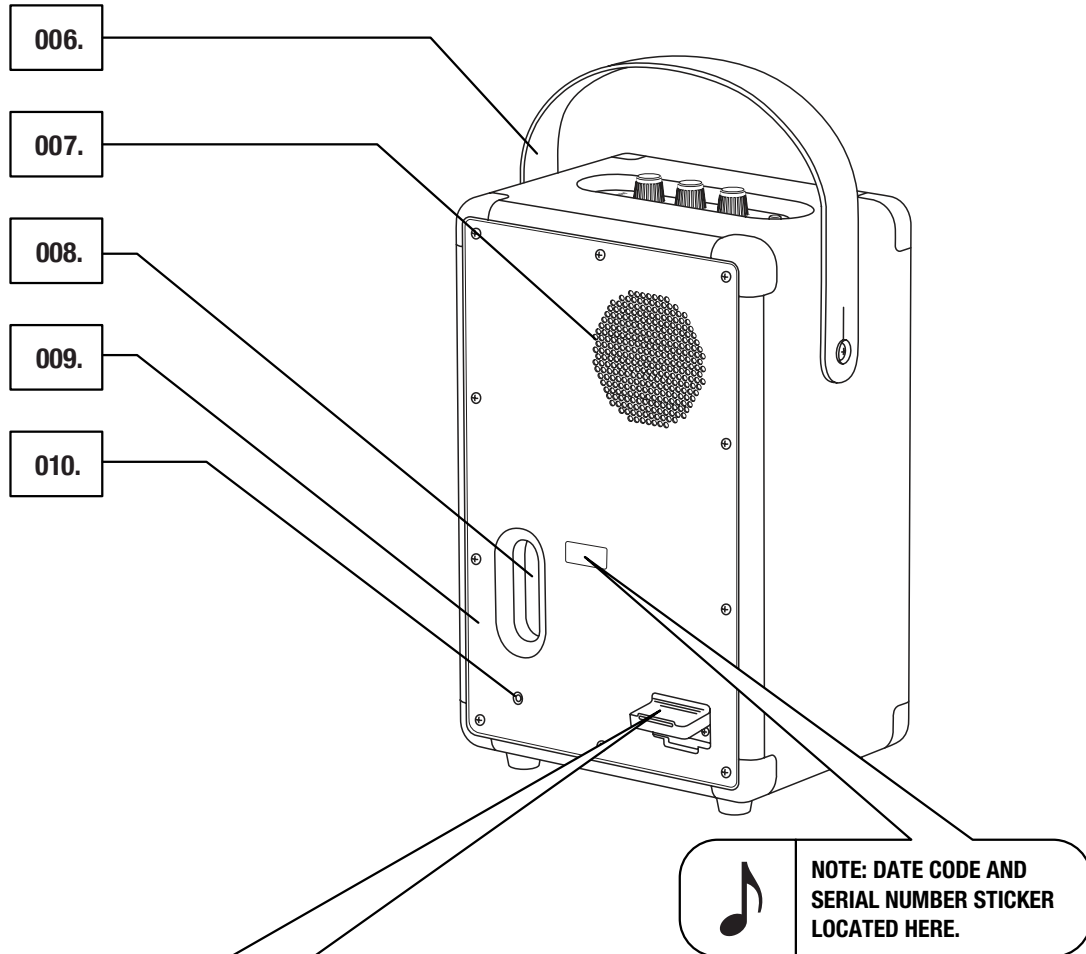


005.

Marshall

GENERAL DESCRIPTION CONTINUED

- 006. DETACHABLE CARRY STRAP
- 007. REAR DRIVER
- 008. BASS PORT
- 009. BACKPLATE
- 010. AUX INPUT FOR 3.5 mm JACK
- 011. MAINS INPUT
- 012. MAINS LEAD

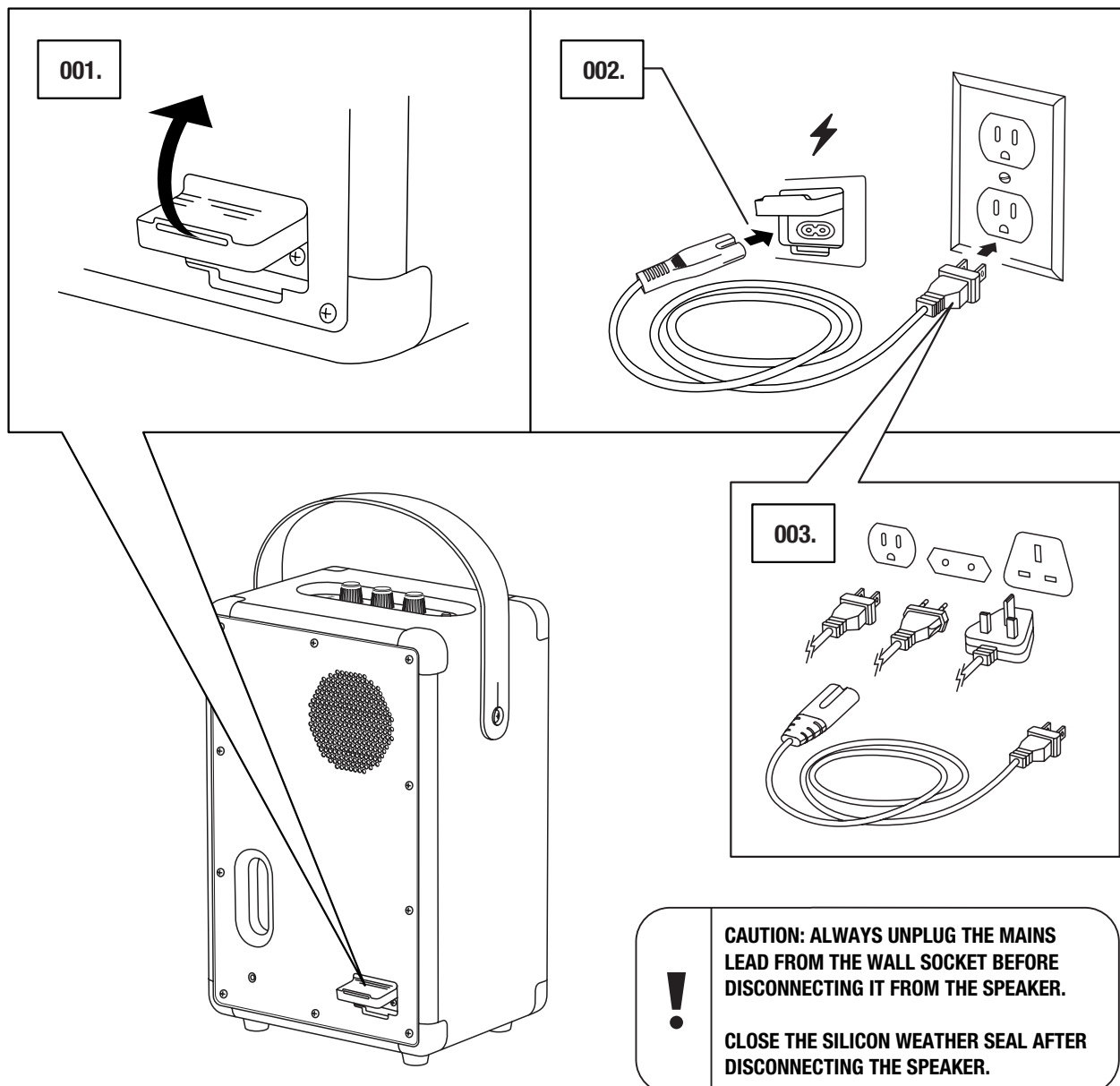


CHARGING THE INTERNAL BATTERY

IMPORTANT: ALWAYS ENSURE THAT THE MAINS LEAD, POWER JACK AND SPEAKER ARE COMPATIBLE WITH YOUR MAINS SUPPLY AND WALL SOCKET.

THE TUFTON IS EQUIPPED WITH AN INTERNAL BATTERY WITH A PLAYING TIME OF MORE THAN 20 HOURS AT MID VOLUME. CHARGING THE BATTERY FROM EMPTY TO FULL CHARGE TAKES APPROXIMATELY 2.5 HOURS.

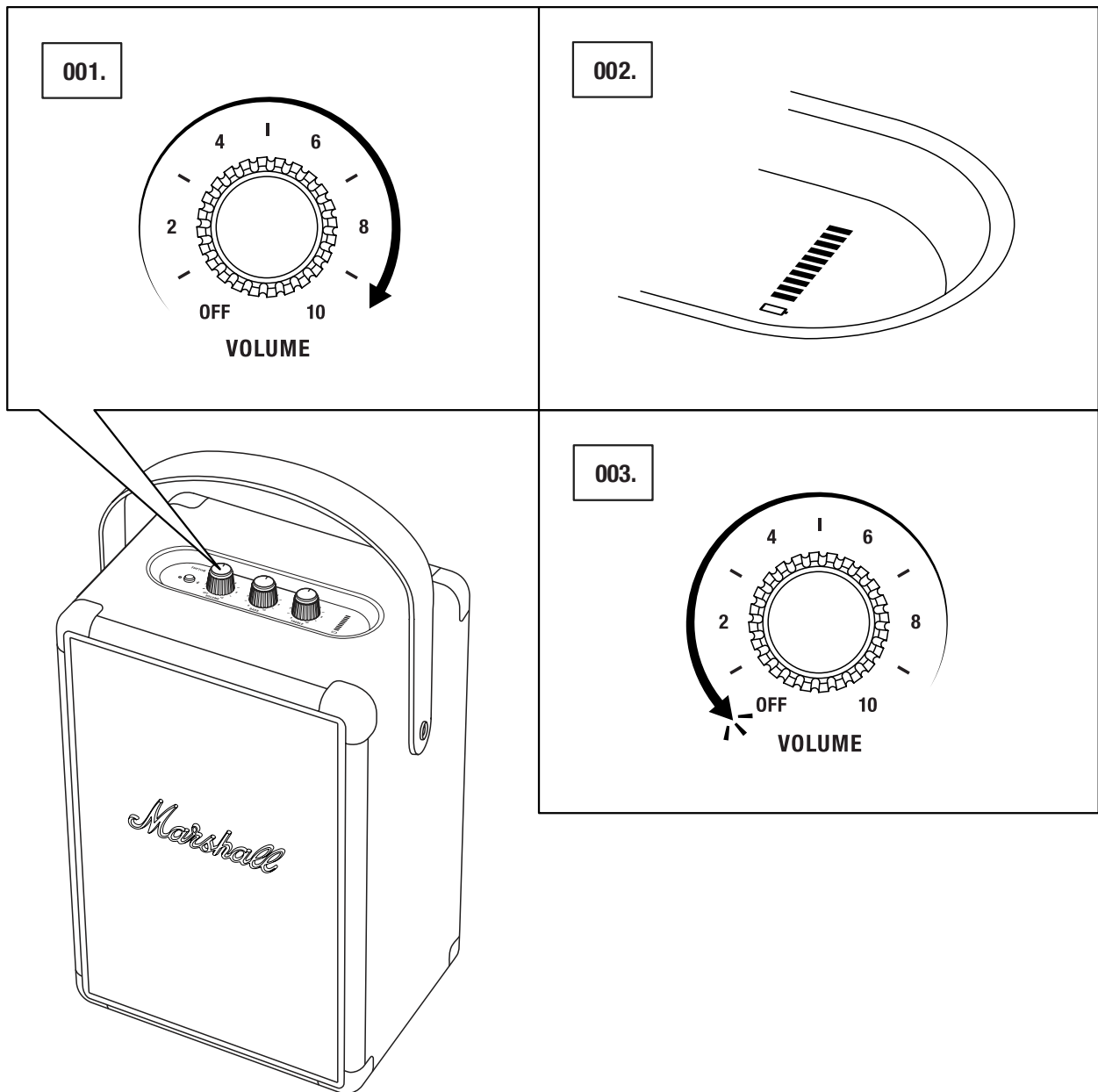
- 001. GENTLY PULL OPEN THE SILICONE WEATHER SEAL ON THE BACK OF THE SPEAKER.**
- 002. CONNECT THE MAINS LEAD INTO THE MAINS INPUT ON THE SPEAKER.**
- 003. CONNECT THE POWER JACK TO THE WALL SOCKET. THE BATTERY CHARGE IS SHOWN ON THE BATTERY LEVEL INDICATOR.**



TURNING THE TUFTON ON/OFF

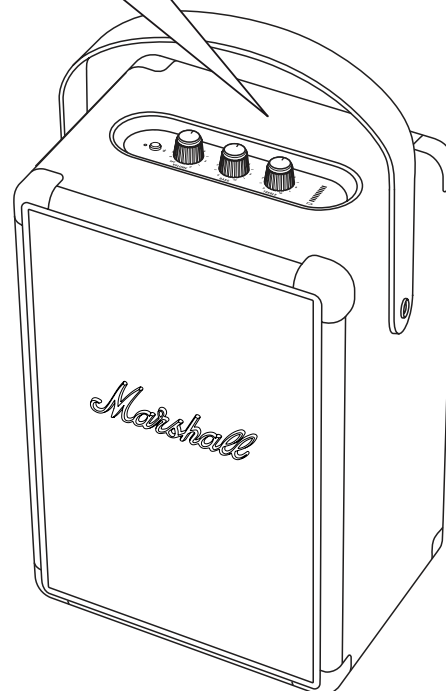
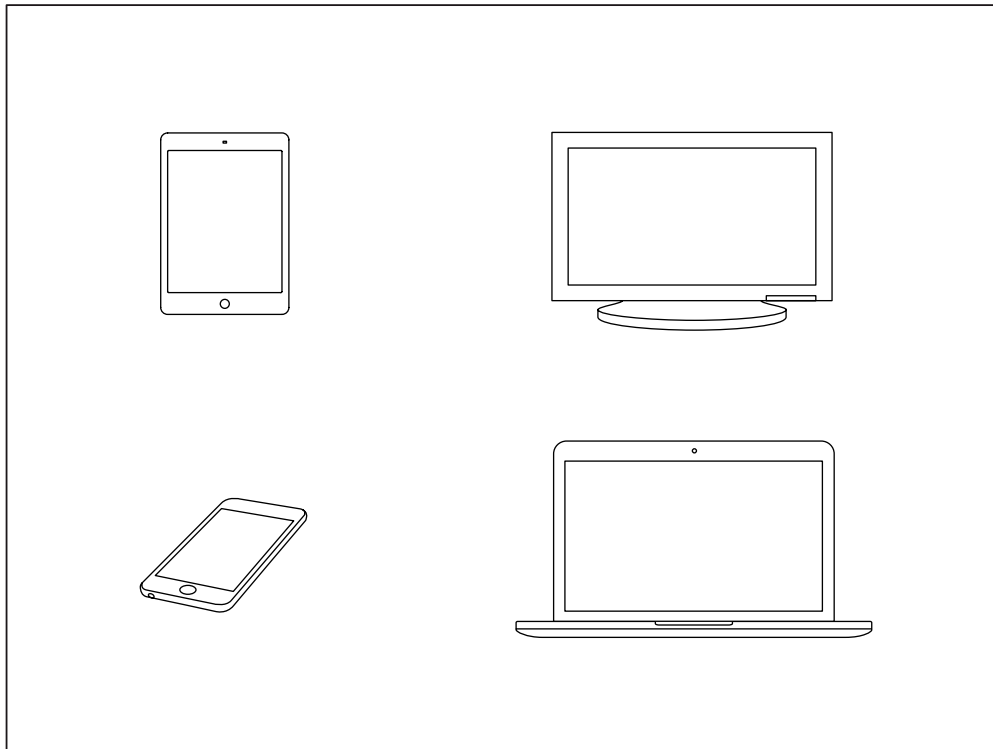
THE VOLUME KNOB DOUBLES AS AN ON/OFF KNOB.

- 001. TURN THE VOLUME KNOB CLOCKWISE TO THE DESIRED VOLUME AND THE SPEAKER TURNS ON.
- 002. THE BATTERY LEVEL INDICATOR SHOWS THE BATTERY CHARGE.
- 003. TURN THE VOLUME KNOB FULLY COUNTER-CLOCKWISE UNTIL YOU HEAR A CLICK TO TURN OFF THE SPEAKER.
- 004. ALL INDICATORS TURN OFF.



MANY WAYS TO CONNECT

THERE ARE MANY WAYS TO CONNECT TO YOUR TUFTON. THE CONNECTION CAN BE WIRELESS VIA Bluetooth OR BY USING A CABLE WITH A 3.5 mm STEREO JACK.

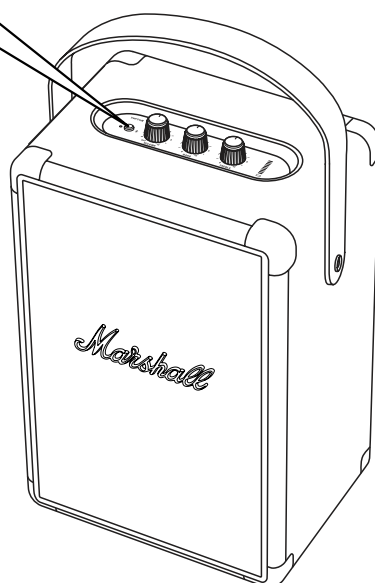
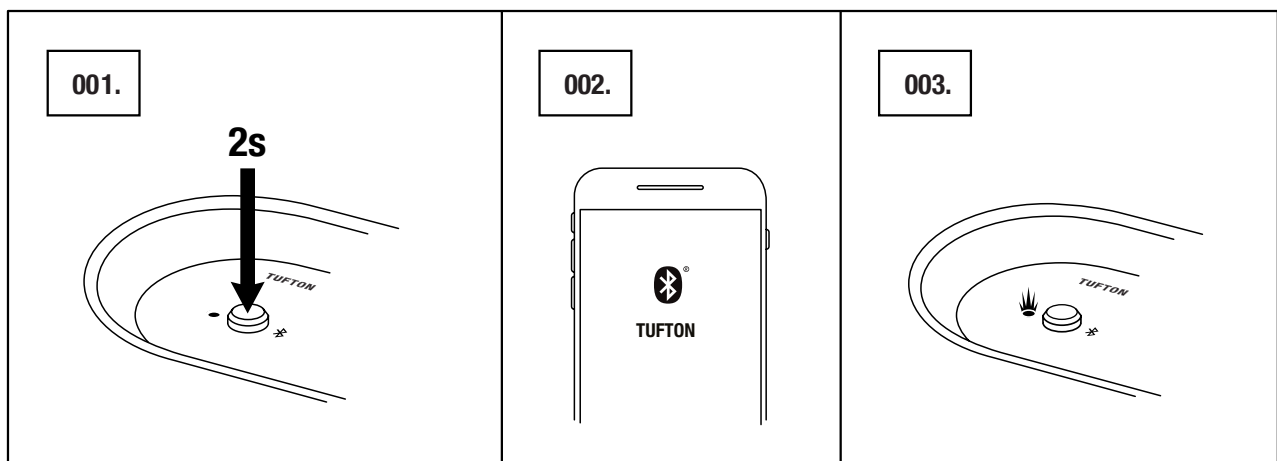


CAUTION: MAKE SURE THAT THE VOLUME IS SET TO LOW ON BOTH THE SPEAKER AND THE MUSIC PLAYER BEFORE USING THE SPEAKER.

CONNECTING VIA BLUETOOTH (PAIRING)

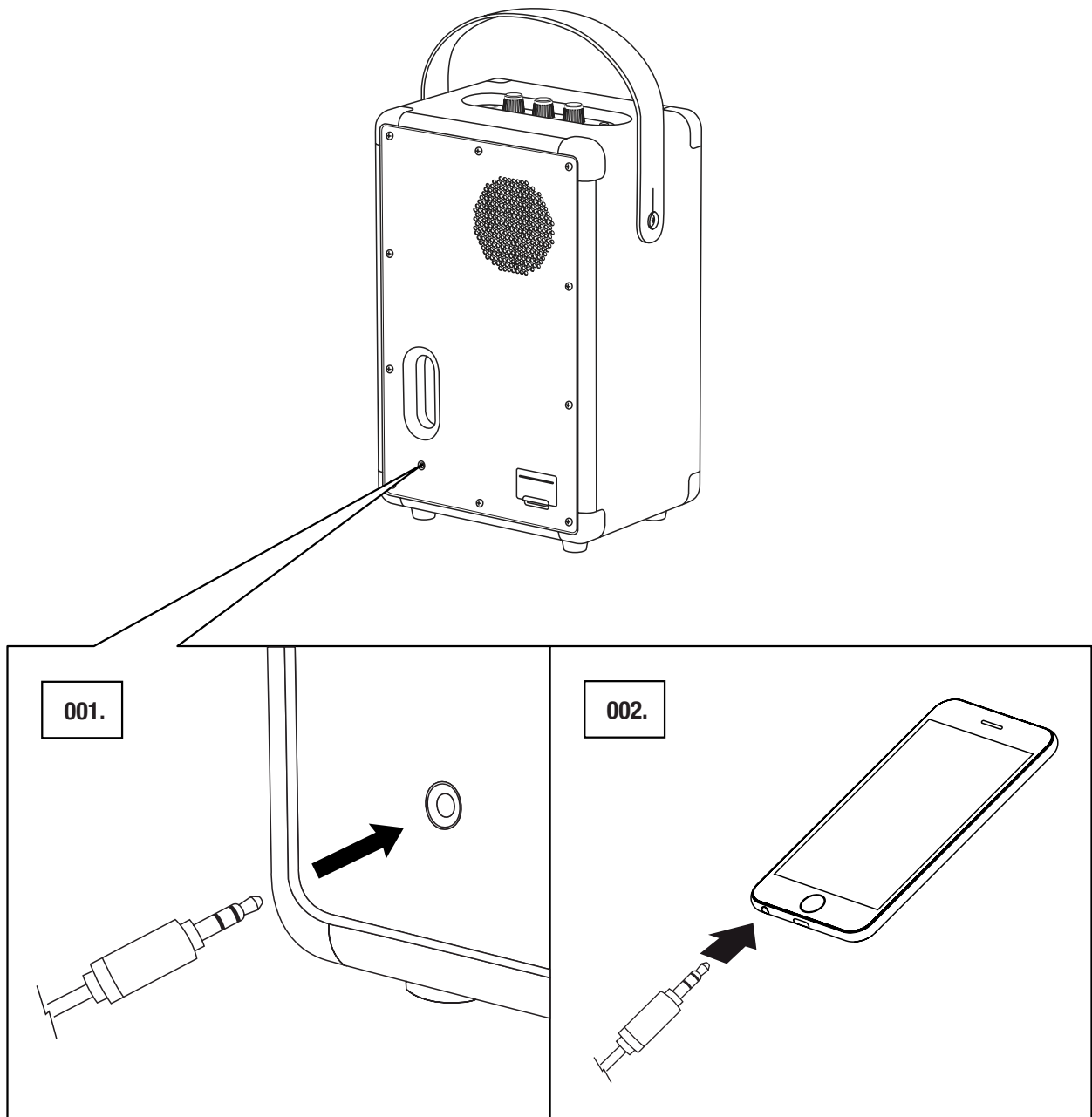
001. PUSH AND HOLD THE Bluetooth BUTTON FOR 2 SECONDS.
THE Bluetooth INDICATOR STARTS TO BLINK.
002. ENABLE Bluetooth ON YOUR DEVICE (SMARTPHONE, TABLET, COMPUTER).
003. SELECT **TUFTON** FROM THE Bluetooth LIST AND ACCEPT PAIRING.
THE Bluetooth INDICATOR ON THE SPEAKER STOPS BLINKING AND REMAINS LIT WHEN THE UNITS ARE CONNECTED.
004. PRESS PLAY ON YOUR AUDIO DEVICE.

TUFTON CAN BE CONNECTED TO TWO Bluetooth DEVICES AT THE SAME TIME. PLAYING A CONNECTED Bluetooth DEVICE WILL MAKE IT THE SELECTED AUDIO SOURCE, PAUSING ANY PREVIOUSLY PLAYED AUDIO ON THE SECOND DEVICE.



CONNECTING VIA AUX INPUT

001. CONNECT A 3.5 mm STEREO JACK TO THE INPUT LABELLED **AUX** ON THE BACK OF THE SPEAKER.
002. CONNECT THE OTHER END OF THE LEAD TO THE AUDIO OUTPUT ON YOUR MUSIC PLAYER.
003. PRESS PLAY ON YOUR AUDIO DEVICE.

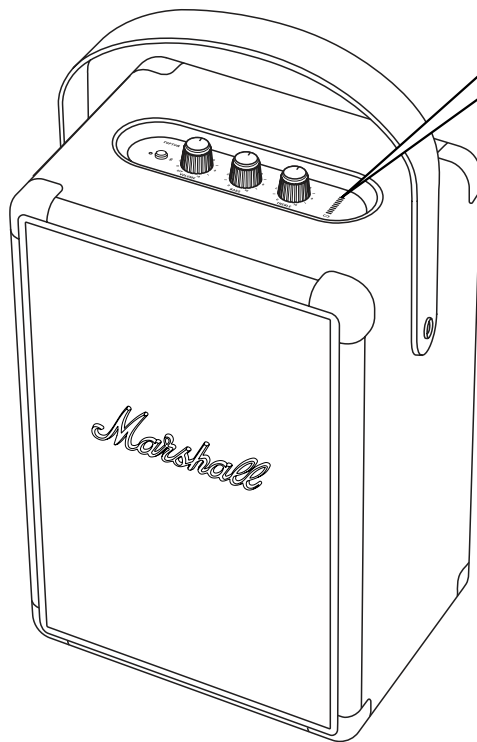
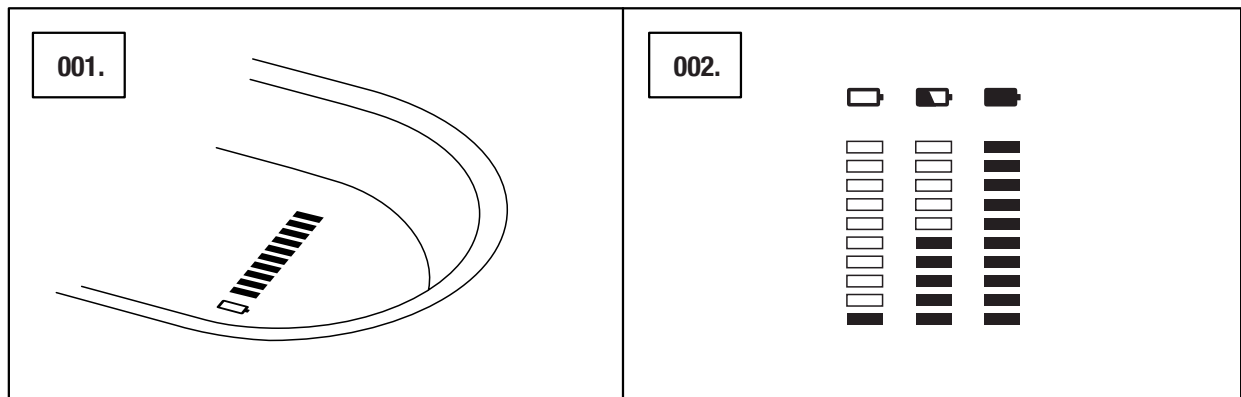


**NOTE: AUDIO CABLES
ARE NOT INCLUDED IN
THE TUFTON.**

BATTERY LEVEL INDICATOR

THE BATTERY LEVEL INDICATOR SHOWS THE REMAINING CHARGE OF THE TUFTON. THE INDICATOR IS DIMMED DURING NORMAL OPERATION TO SAVE BATTERY POWER. TURNING ANY KNOB WILL MAKE THE INDICATOR LIGHT UP.

WHEN CHARGING THE BATTERY, THE INDICATOR DISPLAYS THE BATTERY CHARGE WITH A RISING ANIMATION.



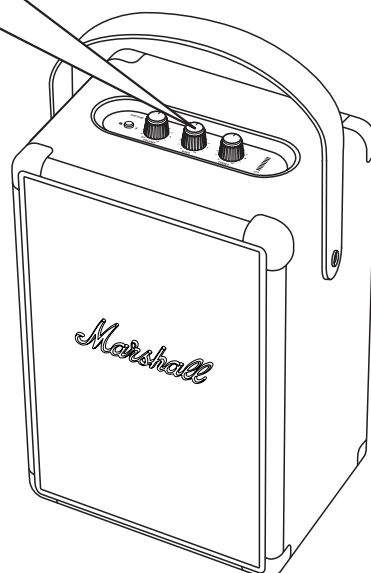
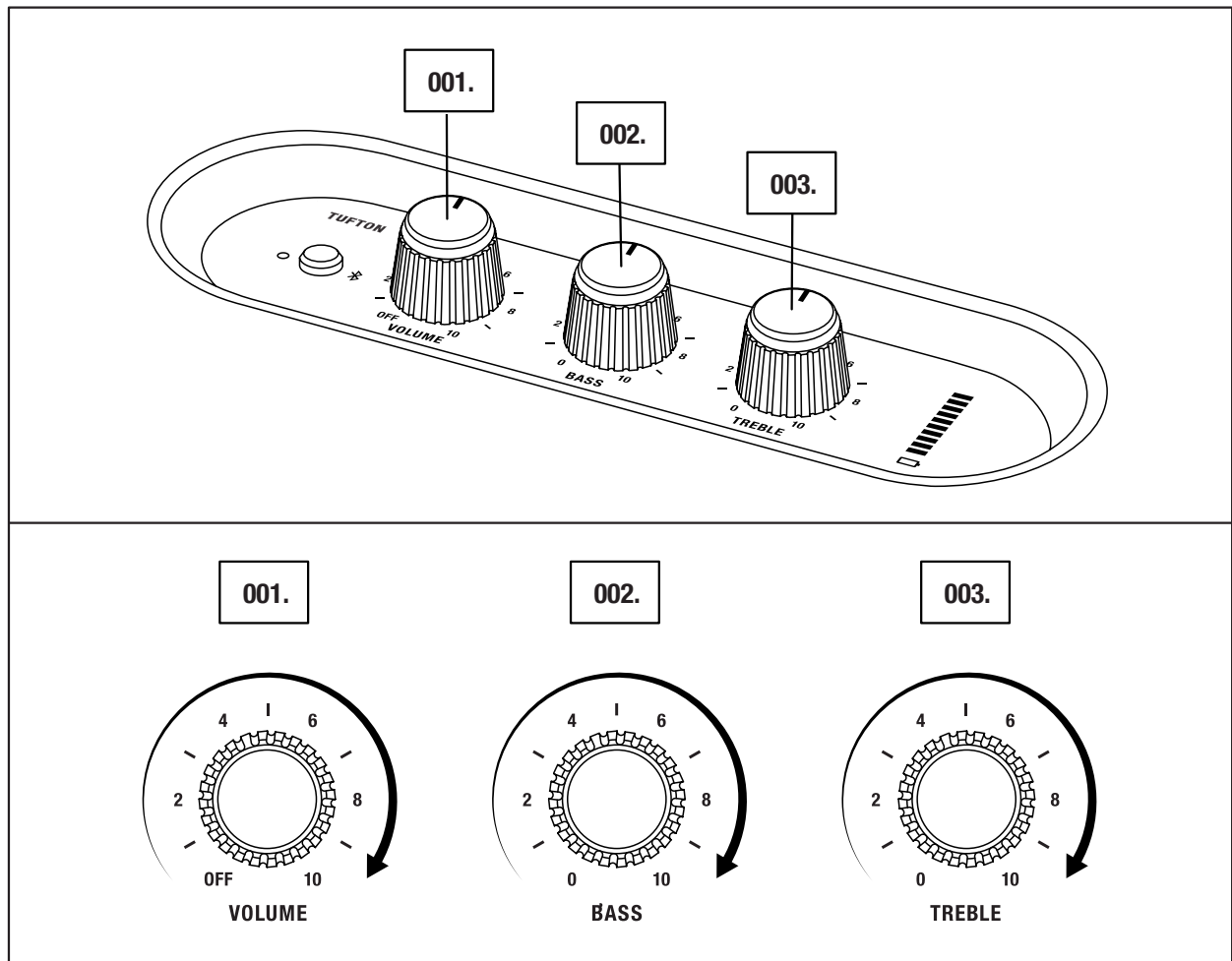
ADJUSTING THE VOLUME/BASS/TREBLE

THE TUFTON INCLUDES THREE KNOBS FOR ADJUSTING THE AUDIO.

001. VOLUME KNOB

002. BASS KNOB

003. TREBLE KNOB

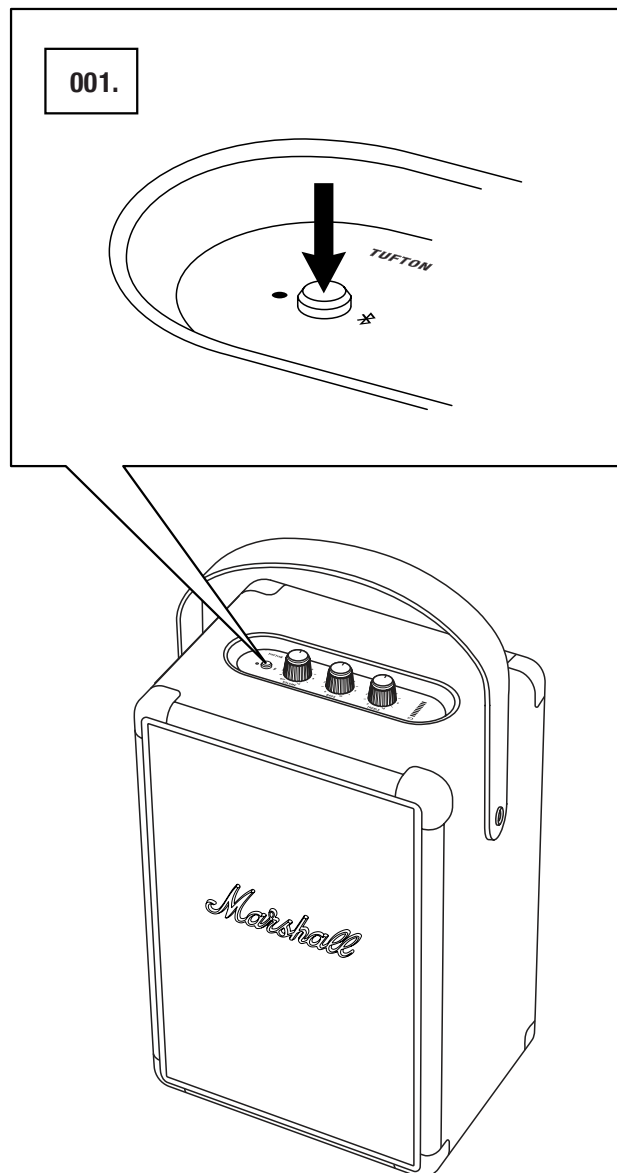


NOTE: THE VOLUME KNOB IS ALSO THE ON/OFF SWITCH.

STANDBY MODE

IF THE TUFTON IS LEFT UNUSED FOR 10 MINUTES THE SPEAKER SAVES BATTERY CHARGE BY GOING INTO STANDBY. IN THIS MODE ALL INDICATORS ARE OFF AND THE SPEAKER DOES NOT RESPOND TO THE Bluetooth CONNECTION.

001. PUSH THE Bluetooth BUTTON TO WAKE THE SPEAKER FROM STANDBY MODE.



 NOTE: THE INTERNAL BATTERY CAN BE CHARGED WHILE IN STANDBY MODE.

TECHNICAL INFORMATION

ACOUSTIC SPECIFICATION

- **PORTABLE STEREO LOUDSPEAKER WITH BASS REFLEX SYSTEM**
- **DIGITAL CLASS D AMPLIFIERS:** 1 X 40 W + 2 X 15 W + 1 X 10 W
- **16 mm DOME TWEETER:** 1 X
- **2" FULL RANGE DRIVERS:** 2 X
- **5.25" WOOFER:** 1X
- **BASS AND TREBLE TONE CONTROLS**
- **FREQUENCY RESPONSE:** 40–20,000 Hz \pm 6 dB
- **MAXIMUM SOUND PRESSURE LEVEL:** 102 dB SPL @ 1 m

CONNECTIVITY

- **BLUETOOTH®:** Bluetooth 5.0 WITH Qualcomm aptX™
- **AUX:** 3.5 mm stereo jack

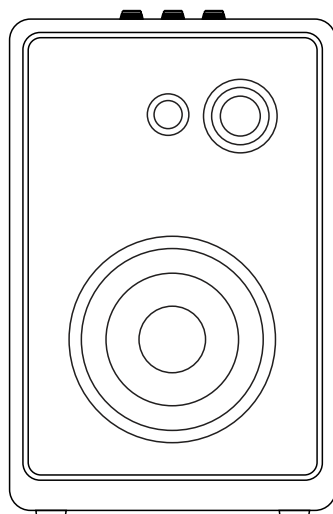
TECHNICAL INFORMATION

- **MAINS INPUT VOLTAGE:** 100–240 VAC
- **MAINS FREQUENCY:** 50–60 Hz
- **SIZE:** 229 X 163 X 350 mm
- **WEIGHT:** 4.9 kg

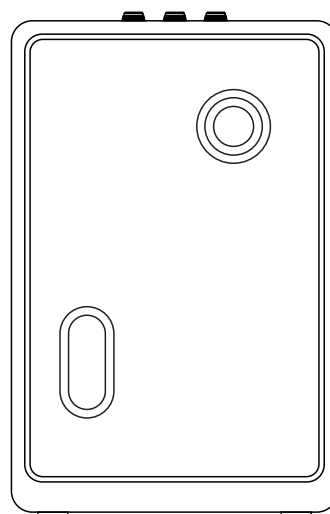
BATTERY

- **BATTERY TYPE:** Built-in, rechargeable Li-ion battery
- **PLAYTIME:** 20+ h
- **CHARGING TIME:** 2.5 h

FRONT



BACK



NOTE: THE FRONT OF THE SPEAKER IS NOT REMOVABLE. THIS ILLUSTRATION INTENDS TO SHOW THE INTERNAL SPEAKER LAYOUT. DO NOT ATTEMPT TO REMOVE THE FRET FOR RISK OF DAMAGING YOUR SPEAKER.

TROUBLESHOOTING

PROBLEM	CAUSE	ACTION
THE TUFTON DOES NOT TURN ON.	The battery is discharged.	Connect the mains lead to the Tufton and a working wall socket.
THERE IS NO AUDIO	The wrong audio source is selected.	Ensure that the device is connected to the Tufton. Check that there is no other device connected that is playing.
	Volume is set too low on either the audio source or the speaker.	Slightly increase the volume on your audio source or the speaker.
CANNOT CONNECT OR PAIR WITH A Bluetooth DEVICE	Bluetooth is not enabled on your device (smartphone, tablet, computer).	Activate Bluetooth on your device.
	There are already two devices connected to the speaker.	Disconnect one of the connected Bluetooth devices before connecting to the speaker.
	The speaker is not in pairing mode.	Push and hold the Bluetooth button for 3 seconds to make the speaker discoverable by the device.
	Your device prompts you for a pin code.	In most cases, no pin code (password) is needed. If a pin code is requested, use the pin code 0000 .

TROUBLESHOOTING

PROBLEM	CAUSE	ACTION
THE SPEAKER IS NOT RESPONDING	A software problem has occurred.	Unplug the speaker power jack from the wall socket, wait for 15 seconds, then plug it in again.
Bluetooth CONNECTION DROPS OUT	The two Bluetooth devices are too far apart or the connection is affected due to obstacles.	Move the devices closer so that they are within 10 metres, and unobstructed by obstacles such as walls or doors.
	There is a strong electric field surrounding the Tufton.	Items such as microwave ovens, wireless network adapters, fluorescent lights and gas cookers use the same frequency range as the Bluetooth device. This may lead to electrical disturbances.
THERE IS A CRACKLING SOUND	The amplifier is clipping as it has run out of output power.	Decrease the volume on your audio source.
		Lower the volume or bass on the Tufton.

TROUBLESHOOTING

PROBLEM	CAUSE	ACTION
THE AUDIO IS DISTORTED	Volume is set too high on the audio source.	Turn down the playback volume on the audio source.
	The audio stream or audio file is of poor quality.	Try another audio file or music player.
	Volume is set too high on the Tufton.	Lower the volume on the speaker.
	Too much bass/treble on the speaker.	Lower the bass/treble on the speaker.
ERRATIC PERFORMANCE	Interference from another electronic device.	Move the Tufton to another spot.
		Turn off or move the interfering electronic device.

NOTES:

A Bluetooth DEVICE COULD CAUSE AUDIO-RELATED OR TECHNICAL FAULTS, DEPENDING ON USE, IN THE FOLLOWING CASES:

- WHEN SOME PART OF THE BODY IS IN CONTACT WITH THE RECEIVING/TRANSMITTING SYSTEM FOR THE Bluetooth DEVICE OR THE TUFTON.
- ELECTRICAL VARIATIONS DUE TO OBSTACLES IN THE FORM OF WALLS, CORNERS, ETC.
- EXPOSURE TO ELECTRICAL DISRUPTIONS FROM DEVICES WITHIN THE SAME FREQUENCY BAND, FOR EXAMPLE MEDICAL EQUIPMENT, MICROWAVE OVENS AND WIRELESS NETWORKS.

THIS WIRELESS DEVICE MAY CAUSE ELECTRICAL DISRUPTIONS DURING USE.



WWW.MARSHALLHEADPHONES.COM